

Greatest glacier of the Alps



Aletsch Arena in the winter

MEDIA KIT, WINTER 2022–2023



8 December 2022 to 15 April 2023

aletscharena.ch/saison



Winter News	4
1 Ice skating.....	4
1.1 “Inschi Ischbahn” – an ice rink for the Fieschertal valley	4
.....	5
2 Skiing – Family	5
2.1 Gletschi Family Fun Slope between Blausee and the training lift	5
.....	6
3 Family	6
3.1 “Gletschiland” – indoor playground at Bachtla Sports Centre.....	6
4 Touring	6
4.1 New Grand Tour of Switzerland photo spot on Bettmeralp	6
.....	7
5 Skiing – Touring	7
5.1 Glacier Panorama Tour – Experience 2.0	7
6 Skiing – Touring – Families.....	7
6.1 Gletschi Tour – Experience 2.0	7
.....	8
7 Skiing	8
7.1 First Track – now from Bettmerhorn	8
.....	8
8 Cuisine.....	8
8.1 Fondue Gondola on Bettmerhorn	8
.....	9
9 Facilities – Snowmaking and sports facilities	9
9.1 Riederalp snowmaking facilities	9
9.2 Upgrading of the Flesch chairlift, Fieschertal.....	9
9.3 EV charging stations at Betten valley station.....	10
.....	10
10 Awards	10
10.1 Aletsch Arena Test Winner: Best Panorama 2022	10
.....	11



11	2.2 Cross-country skiing	11
	11.1 Aletsch Glacier meets Goms cross-country ski trail	11
	12
12	Food service and hotel industry	12
	12.1 New restaurant "Schickeria"	12
	12.2 Remodelling and renovation of Hotel Panorama	12
	12.3 Bathroom renovation at the hotel Jungfrau	13
13	And finally	14

Intro

This document contains our Winter News 2022/2023.

All media information (inspirational topics, media releases, picture galleries, facts and figures, etc.) can be found in the Media Corner:

aletscharena.ch/en/media



Winter News



1 Ice skating

1.1 “Inschi Ischbahn” – an ice rink for the Fieschertal valley

Benjamin Zaugg is president of the association “Inschi Ischbahn Blätz”. Teaming up with Florian Zeiter and Patrick Stockalper, he initiated the new ice rink in Fieschertal. The floodlit [natural ice rink](#) measures 25x35m. As of this winter, guests and locals can enjoy ice-skating, hockey or curling in the Fieschertal valley. Weather permitting, the natural ice rink will remain open from December to the end of February.

[More on the topic of ice-skating](#)

[Click here for the video](#)





2 Skiing – Family

2.1 Gletschi Family Fun Slope between Blausee and the training lift

In the coming winter season 2022/23, Aletsch Bahnen AG will be launching a Gletschi Family Fun Slope near Lake Blausee on Bettmeralp. The new Fun Slope promises families even more fun on the slopes. The existing snow parks, such as the one at Schönbiel on Bettmeralp, are getting a makeover that will add some exciting new elements. The highlight, the halfpipe, will remain. On Fiescheralp, too, the new “Funcross Aletsch” provides a special kind of experience on the slopes.

More on the Gletschi Family Fun Slope



3 Family

3.1 “Gletschiland” – indoor playground at Bachtla Sports Centre

The Bachtla Sports Centre Foundation is launching a new offering for families: “Gletschiland” at Bachtla Sports Centre on Bettmeralp. The new indoor playground offers space for 120 children from the age of four. The playground will be formally opened on 18 December 2022. “Gletschiland” is open daily from 18 December 2022 to 15 April 2023. Entrance fee CHF 10 per day, per child, from 4 years.

[More information about Gletschiland | more about the opening](#)



4 Touring

4.1 New Grand Tour of Switzerland photo spot on Bettmeralp

The 1,643 km [Grand Tour of Switzerland](#) is the most beautiful route for a round trip through Switzerland by car or motorcycle. The tour features stunning views along the route with photo spots. One [photo spot](#) is located on [Eggishorn](#).

Starting this winter, there will also be a [photo spot on Bettmeralp](#) to discover. The second photo spot in the Aletsch Arena is located about 400m from the Bettmeralp cable car mountain station. With an enthralling view of the Maria zum Schnee chapel and the surrounding Valais mountains.





5 Skiing – Touring

5.1 Glacier Panorama Tour – Experience 2.0

The Aletsch Bahnen **Glacier Panorama Tour** has been revamped this winter with the objective of offering skiers and snowboarders a challenging circular tour through the entire ski area of the Aletsch Arena. It lets guests discover the most beautiful slopes and the most stunning view points with their views across the Great Aletsch Glacier.

aletscharena.ch/glacier-panorama-tour



6 Skiing – Touring – Families

6.1 Gletschi Tour – Experience 2.0

The **Gletschi Tour** is a winter sports tour through the Aletsch Arena for the whole family. You're always on Gletschi's trail as you ski the red and blue slopes. Fun, adventure and variety await you throughout the Gletschi Tour, which takes in all the highlights such as Family Fun Slopes, snow tubing, Skimovie and Co., etc.

aletscharena.ch/gletschi-tour-en





7 Skiing

7.1 First Track – now from Bettmerhorn

It's something every winter sports enthusiast dreams of: for once, being the very first person to carve down the freshly groomed "white carpets". This winter, Aletsch Bahnen are launching the First Track offer from Bettmerhorn to Bettmeralp. At 8:15, the gondola lift takes guests up to Bettmerhorn, where they enjoy the breathtaking vista of the Great Aletsch Glacier. This is followed by a descent down the freshly prepared and untouched slopes, accompanied by a ski instructor. The experience is rounded off with a Mountain Breakfast at the Bättmerhitta.

aletscharena.ch/first-track-en

[More about the First Track Bettmerhorn](#)



8 Cuisine

8.1 Fondue Gondola on Bettmerhorn

From winter 2022/2023, a special kind of fondue evening will be held once a week in the gondolas of the Bettmerhorn cable car on Bettmeralp. The gondolas are equipped for up to four persons. A cheese fondue is served, which can be enjoyed during a ride up the mountain and back down again. A culinary and traditional Valais experience on Bettmerhorn.

[More about the Fondue Gondola Bettmerhorn](#)





9 Facilities – Snowmaking and sports facilities

9.1 Riederalp snowmaking facilities

This summer, Aletsch Bahnen AG is set to complete the final stage of the snowmaking facility on Riederalp. This will be good news for the area of Greicherläger, Alpenrose and Brigger, which covers a total of 2.4 km.

Artificial snowmaking is particularly important in this sector. It allows Riederalp West to be accessed via the slopes even when there is little natural snow.

More about Aletsch Bahnen AG



9.2 Upgrading of the Flesch chairlift, Fiescheralp

Aletsch Bahnen AG is replacing the control system of the Flesch chairlift this summer so that it is once again state-of-the-art. The existing seats are being upholstered and fitted with new restraining bars.

In the course of the refurbishment, a moving walkway is also being installed to make the boarding process easier and thus also smoother. This upgrade represents genuine added value, especially for the transport of children and for ski school classes.

More about Aletsch Bahnen AG

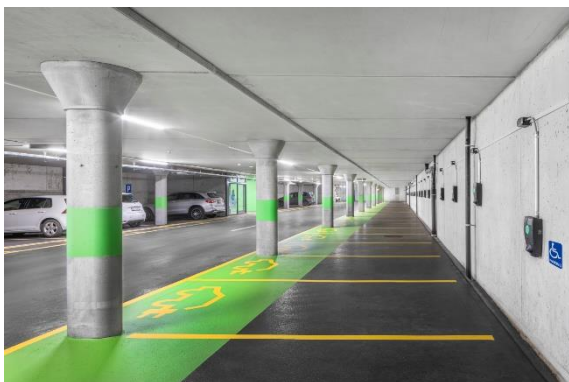




9.3 EV charging stations at Betten valley station

Aletsch Bahnen AG is offering 27 new charging points for electric vehicles from this winter season. The new EV charging stations are located in the car park in Betten valley station. The 27 charging points each offer up to 22kW of power and are managed by [evpass](#). A charging card from a European e-mobility provider is required for charging, or individual stations can be activated via a mobile phone app.

[More about the EV charging stations](#)



10 Awards

10.1 Aletsch Arena Test Winner: Best Panorama 2022

With its views of the Aletsch Glacier, the Aletsch Arena was named 2022 Test Winner in the “Best Panorama” category by Skiresort.de, the world’s largest test portal for ski resorts.

[To the Test Report](#)

[Best Panorama – Test Winner Highlights](#)





11 2.2 Cross-country skiing

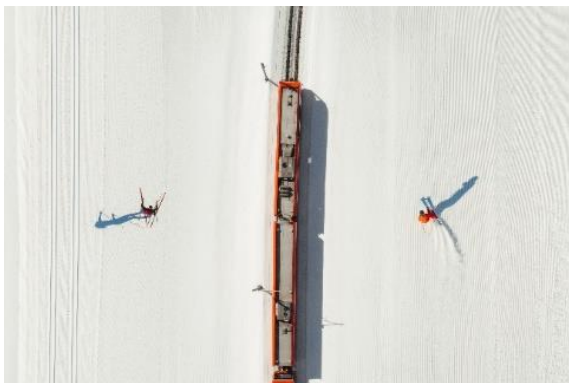
11.1 Aletsch Glacier meets Goms cross-country ski trail

Aletsch Bahnen are launching a new cooperation offer in conjunction with Obergoms Tourism and the Matterhorn-Gotthard-Bahn: a combi-ticket for downhill and cross-country skiers.

The combined offer comprises a season ski pass for the Aletsch Arena and a Talisman Season Pass for the Goms cross-country trail including the train line of the Matterhorn Gotthard Bahn between Brig and Oberwald.

aletscharena.ch/goms-crosscountry

[For more details of the offer](#)



12 Food service and hotel industry

12.1 New restaurant “Schickeria”

Anke and Friedrich Buxbaumer have been managing the Bootshüsi at Lake Bettmer successfully in summer for many years. They are now taking on the new “Schickeria” from early December 2022. Offering a range of snacks, the restaurant is located right by the Schönbiel chairlift.

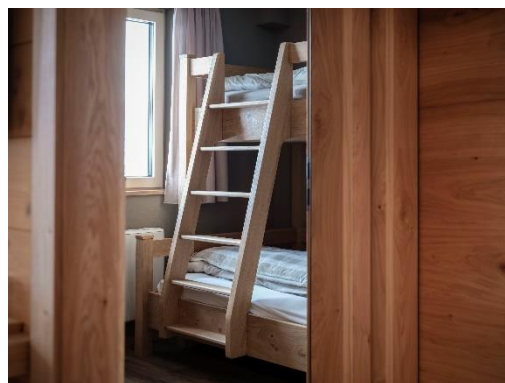
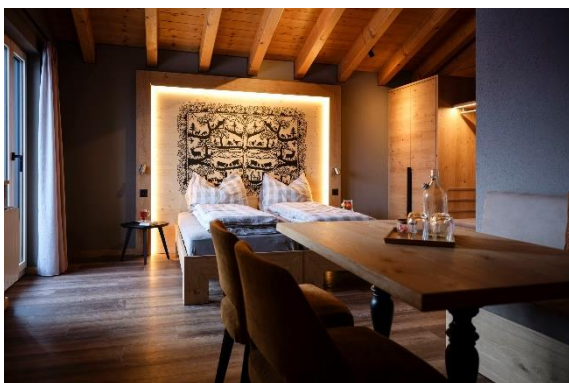
bootshüsi-bettmeralp.ch



12.2 Remodelling and renovation of Hotel Panorama

Hosts Marina and Serge Schmidhalter have renovated their Hotel Panorama. In its central location on Bettmeralp, it looks out on the Matterhorn and the Maria zum Schnee Chapel, the emblem of Bettmeralp. The 16 rooms were completely refurbished. It will feature an exciting new concept for the hotel team and their guests. The reopening was celebrated with an open day on 16th December 2022.

panorama-bettmeralp.ch



12.3 Bathroom renovation at the hotel Jungfrau

The team of the Hotel Jungfrau family Lea Vögele and Marcel Albrecht with son Kai have renovated the bathrooms of 18 hotel rooms. Just in time for the Christmas season, they were able to present them to the guests.

[More about the hotel Jungfrau](#)





13 And finally

Sustainability

The breathtaking nature of the Aletsch Arena is its greatest asset. This fact makes the issue of sustainability absolutely vital to the Aletsch Arena.

For example:

- All lifts and cable cars in the region run on various forms of renewable energy.
- Thanks to the good public transport connections, travelling here is convenient, comfortable and glacier-friendly.
- The Aletsch Arena scores high marks for sustainability and environmental protection. In 2019/2020, it was awarded a maximum five out of five stars by the test portal Skiresort.de.

aletscharena.ch/sustainability

Promoting snow sports among children and young people

“Schgii-fer-frii” – discounted travel, ski for free

It is equally important for our younger guests in the Aletsch Arena to be educated on issues of sustainability, environmental protection and nature. That’s why the Aletsch Bahnen encourages travel to the Aletsch Arena by public transport: with the “Schgii-fer-frii” offer. Children and young people ski for free every Saturday and even get 20 percent off the cost of public transport from any Swiss railway station via Snow’n’Rail.

aletscharena.ch/samstag-ski

Kids from the region on the slopes for free

The cable-car companies in the Aletsch Arena (Aletsch Bahnen AG) want to continue to promote winter sports among young people in the region. They have decided to give a free Aletsch Arena season ski pass for the coming winter season to all students of classes 1H–4H in the districts East Raron and Goms.